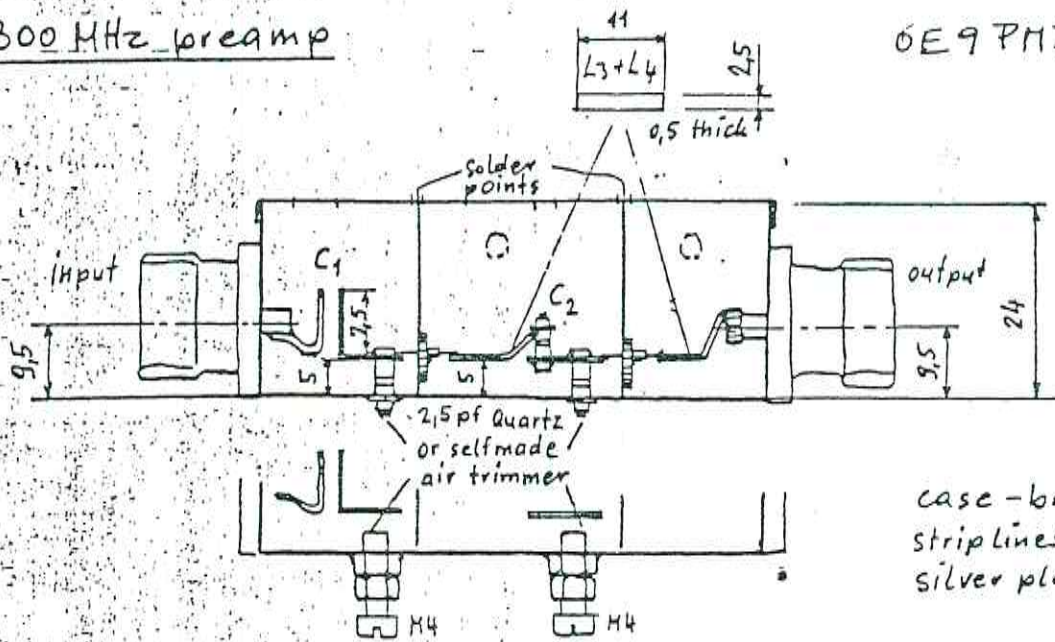


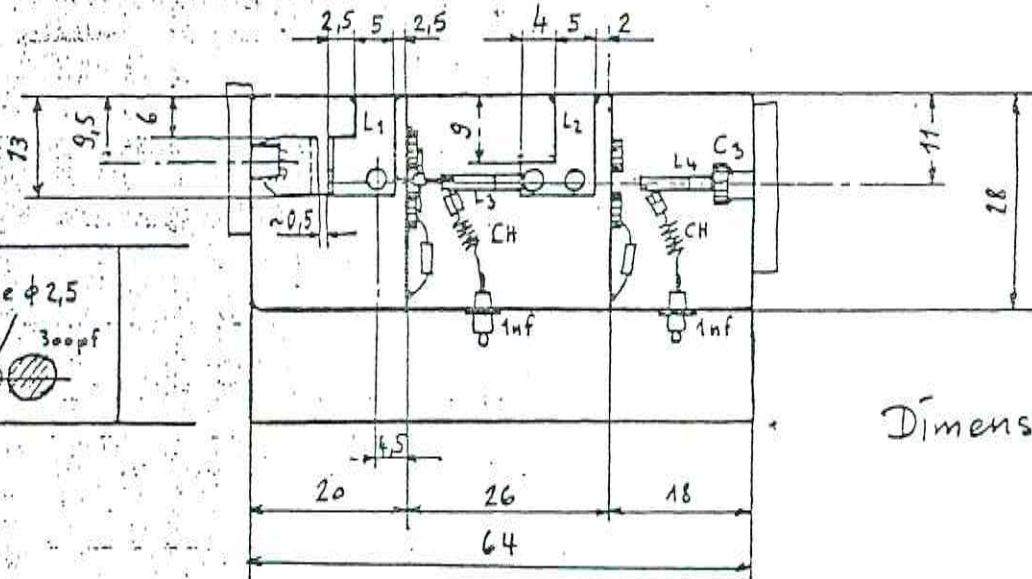
6.5

# 2300 MHz preamp

GE9 PMJ Nov 1983



case - brass sheet  
striplines - copper sheet  
silver plated

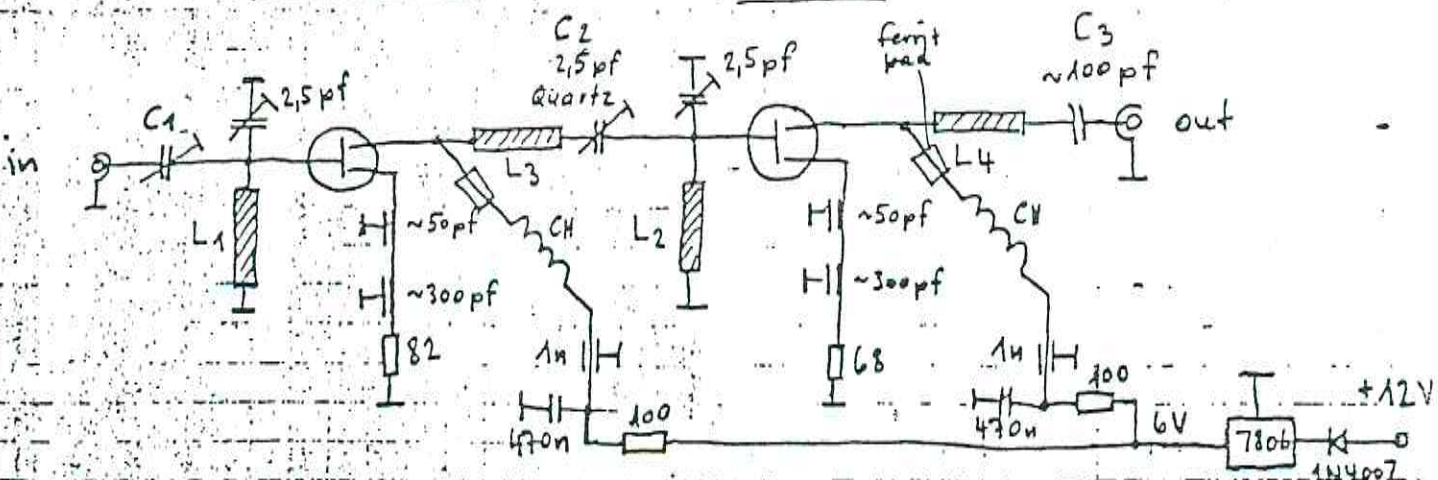


CH = 7 turns  
3 dia, Copper  
wire φ0.3  
(varnished)

Dimensions in mm

MGF 1412-11-09

MGF 1412



Measurements: NF < 0.6 dB, 2300 MHz, gain 32 dB